

# The Moore Theatre



## Social Narrative

We look forward to your visit of A Charlie Brown Christmas at the Moore Theatre on November 23, 2019 at 4:00pm! Theatre is a fun way to experience a story. In these pages you will find things you will see at the Moore Theatre.



SENSORY ACCESS  
ACCESS FOR ALL



I am going to the Moore Theatre to see a **show**. A theatre show is a way of experiencing a story. People move around on a stage and act out and speak the story. People on a stage that tell the story are called **actors**. Actors can tell the story through talking, singing and/or dancing. When actors only talk, it is called a **play**. When actors also sing and dance, it is called a **musical**. The actors will wear make-up and costumes, and might come close to me.





# TICKETS/ENTRANCE



When I get to the theatre, my family and I will walk in and show the person our **tickets**.

If we don't have the tickets yet, we will wait in line at the Box Office.

Everyone has to have a ticket to get into the theatre. Before I go inside, I have to take my coat off. I will go through a big frame that is called a metal detector. When I go through the door, someone will look into our bags, and a ticket person will ask for my ticket and scan it. The scanner makes a beeping sound.







## The Lobby

The **Lobby** is a big room where my family, I and other theater goers wait for the show to begin.

Everyone has to wait for the theatre doors to open. It can be very crowded and noisy here. I can tell my family that I need a quiet spot if it is too noisy for me. The lobby also has places that sell snacks, drinks and items from the show like shirts.

There will be some quiet areas set up if I need to get away from the noise. For this show, there will be Sensory areas upstairs and downstairs.

# BATHROOM

The bathrooms are on the 2nd level up the ramp, and in the basement down the stairs. I can tell my family when I need to use the bathroom. It is good to try to use the bathroom before the show and during **intermission**. Sometimes there is a line of people that want to use the bathroom. I will wait for my turn.

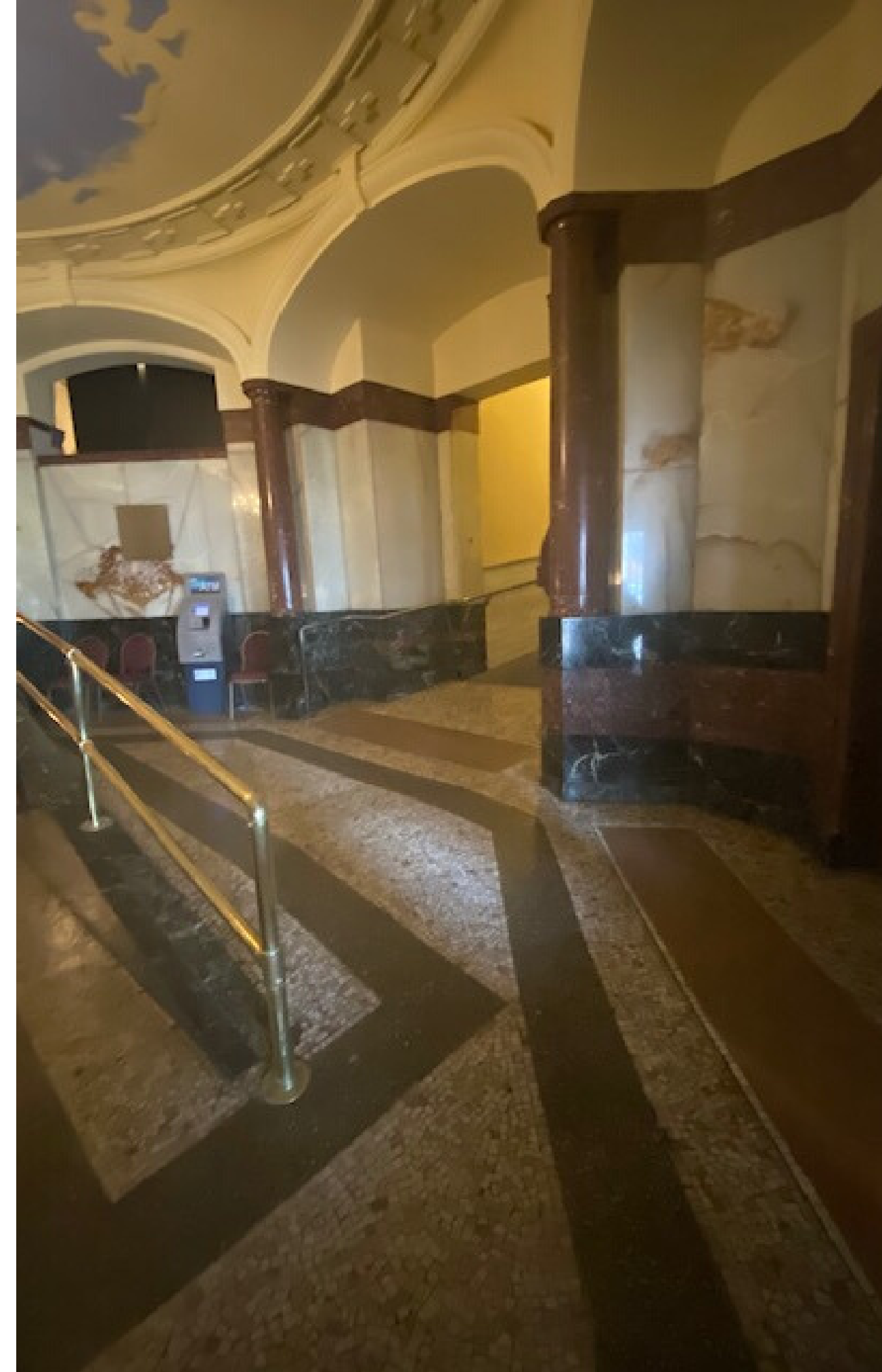
---





# THEATRE DOOR

For this showing, my seats will be up the ramp to the right. Someone that works at the theatre will be at the ramp. That person is called an **usher**. An usher takes a look at your ticket and helps you find your seat.





# INSIDE THE THEATRE

The theatre has lots of seats and a stage. My ticket tells me where my seat is. The usher will help my family find our seats. The seats are in rows. My seat will be with my family. Our seats can be close to the stage or far away. There will be people I don't know sitting around me. The people sitting in the seats are called the audience.







## The Stage

The musical happens on the stage. Only actors and people that work at the theatre are allowed on the **stage**.

Sometimes there is a curtain that hides what is on the stage. Sometimes the curtain is open and I can see what is on the stage. The decorations on the stage are called the **set**. There are no actors on the stage before the show starts.



# Start of the Show

The lights in the theater will go darker when the show is about to begin. Sometimes people will clap when the show is about to start because they are excited to see the show.

People also sometimes clap:

- after a song (short)
- at the end of the first act before the intermission (short)
- at the end of the show (long clapping)

I can clap at these times too if I want to. If the clapping is too loud I can put on headphones or cover my ears. The Volunteers have headphones for me. When people really like a show, they might stand up at the end while they are clapping. This is called a **Standing Ovation**. I can stand or sit!



# The show - A Charlie Brown Christmas

This show is a musical, so there will be music by a three-piece orchestra.

The actors will not have full costumes, they will have clothes that suggest the characters from the comic strip, The Peanuts, which this show is based on.





# INTERMISSION

Most shows have a break, or intermission. The part before the break is called Act 1 and the part after is called Act 2. I can stay in my seat or I can get up and go in the lobby. Intermission is a good time to get a snack, use the bathroom or take a walk with my family.

I know it is time to get back to my seat when the lights flicker in the lobby.

For this show, the intermission is 20 minutes, and the run time of the show is 90 minutes.

# All Done!

At the end of the show, the actors take a bow on the stage and people clap for them to tell them “good job”. My family and I will leave after the clapping is done and the actors leave the stage. Everyone in the theatre will want to leave, so it will take some time to get out of the theatre. It will be crowded. I will wait for my turn to walk out of the doors with my family. My family and I will go into the lobby and then outside.



# Information

## Bus Service

The Moore Theatre is located in the downtown Seattle neighborhood of Belltown and is within walking distance from many major bus stops. For the best possible bus route from your location, please visit the Metro Online Trip Planner at <http://tripplanner.kingcounty.gov/> or please call Metro Transit at 206-553-3000.

## Parking

The Moore Theatre does not have its own parking lot. There is a loading zone right in front of the theatre's main doors to drop off passengers.

There are several pay lots in the area as well as metered street parking (Sundays are free). We recommend Republic Parking NW aka, "the Macy's parking lot" with the entrance at 3rd Ave & Stewart St. There is also parking at Imperial Parking (next to Bed, Bath & Beyond) between Virginia & Stewart at 4th Avenue. Cost varies depending on the individual lot and you will want to refer to the attendant for lot closure times.



SensoryAccess.org

