

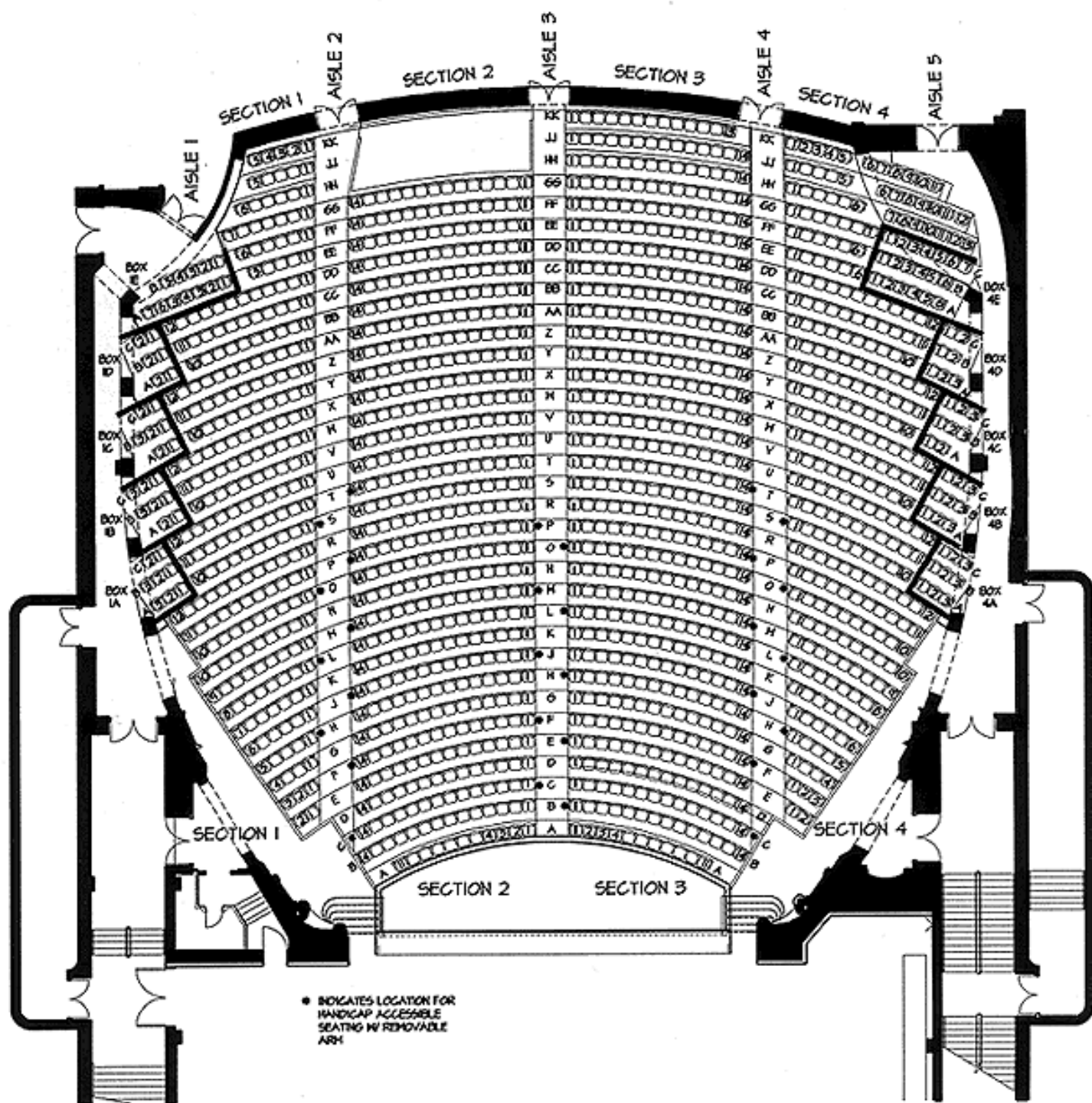


T H E

---

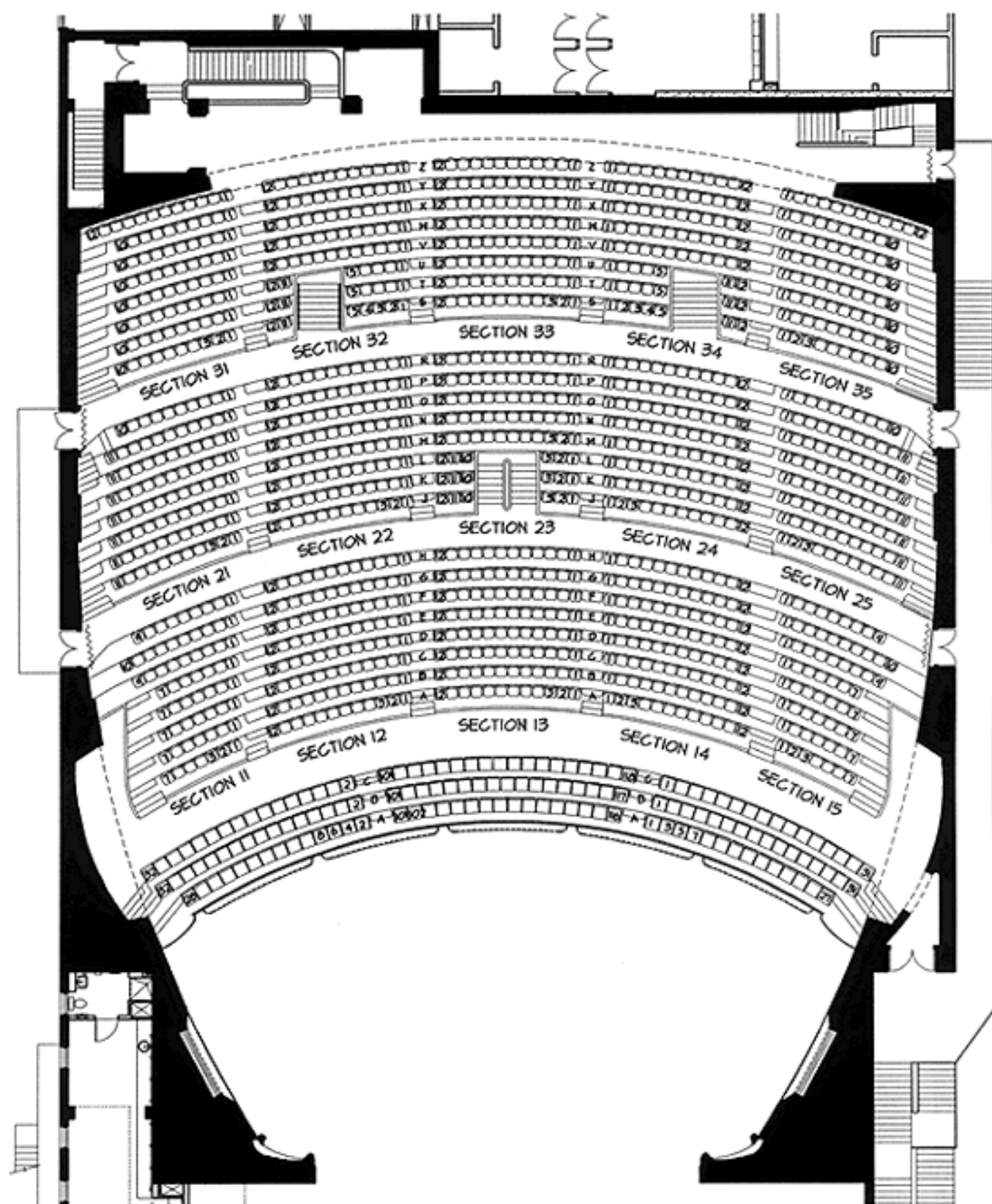
PARAMOUNT

# Stage Plots



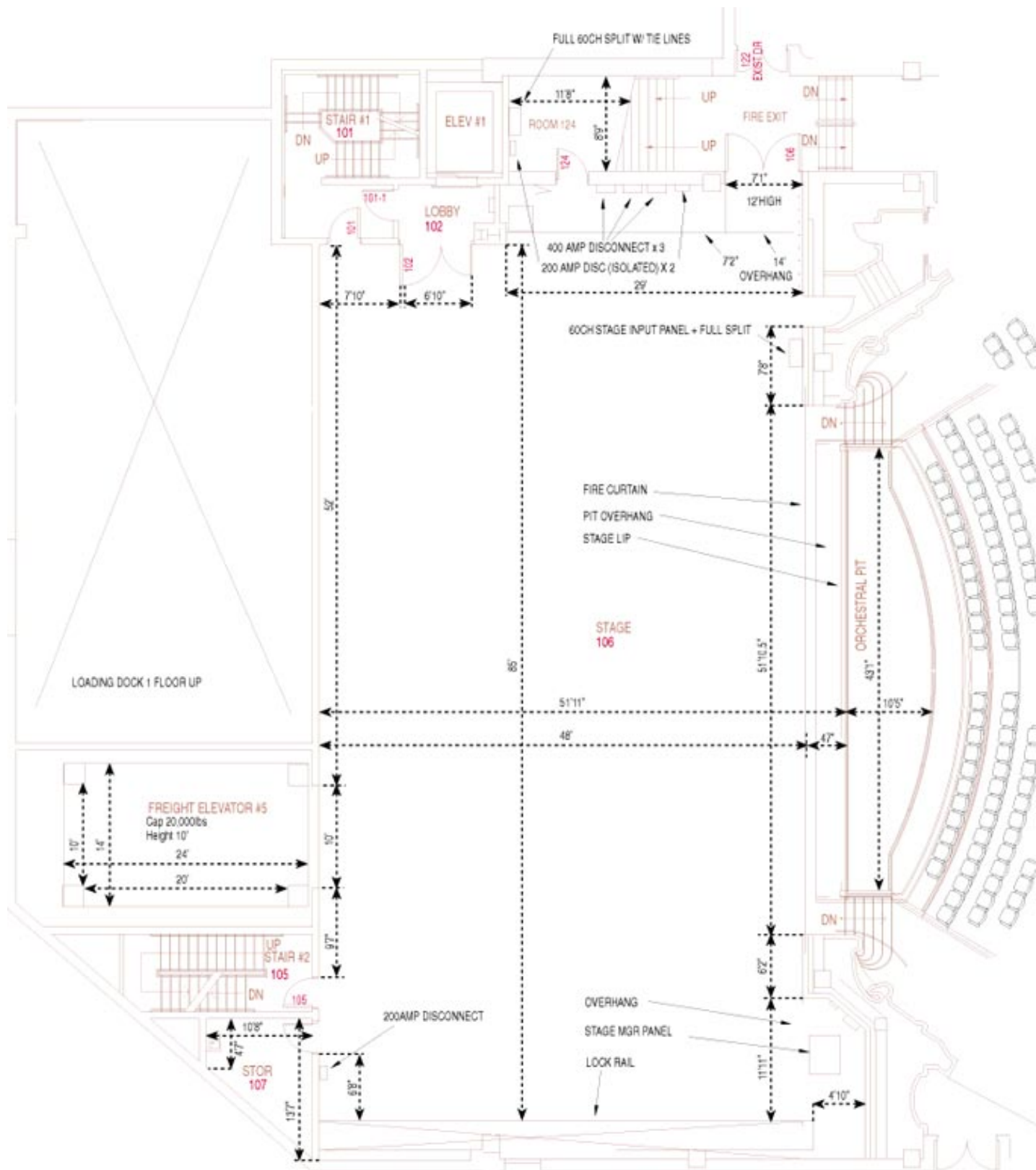
# PARAMOUNT THEATRE

## ORCHESTRA LEVEL SEATING

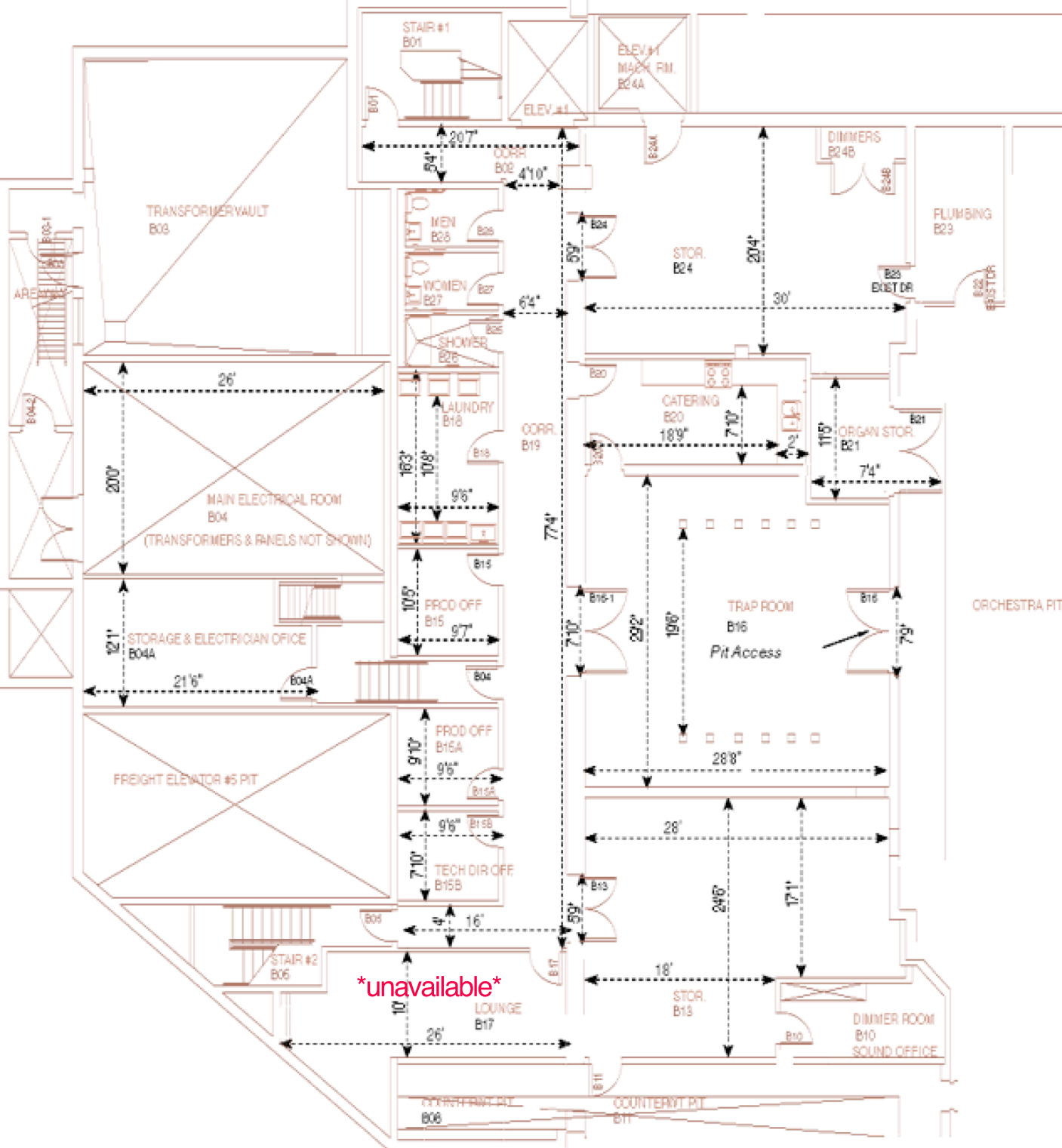


# PARAMOUNT THEATRE

LOGE AND BALCONY LEVEL SEATING



Paramount Theatre: Stage Layout



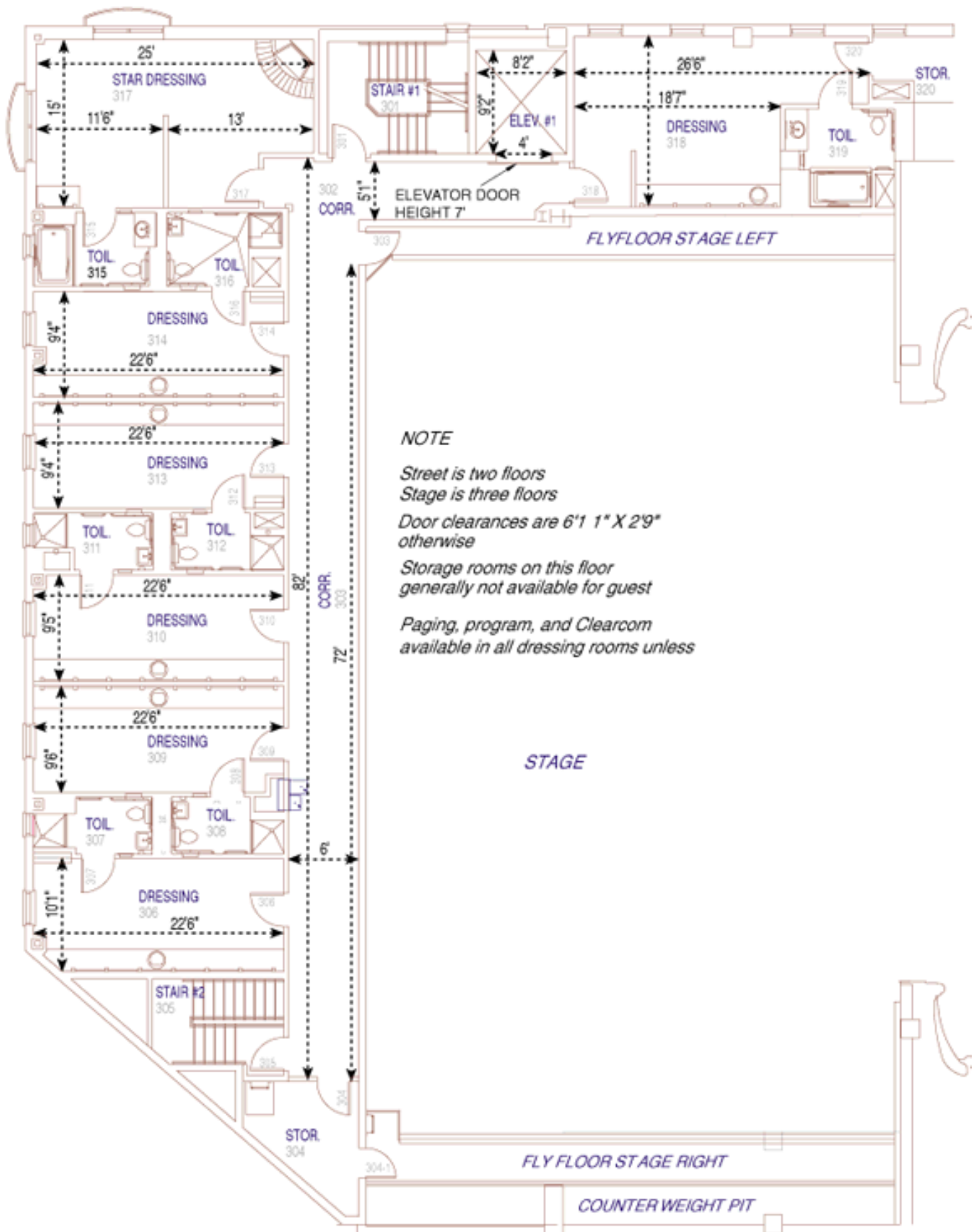
#### NOTES:

All rooms have Clearcom, paging, program feeds available except the following; B18, B21, B23, B26-28

All door clearances are 2'9" x 6'1 1" or larger

Minimum ceiling clearances are greater than 7'10"

9TH AVENUE



#### NOTE

Street is two floors

Stage is three floors

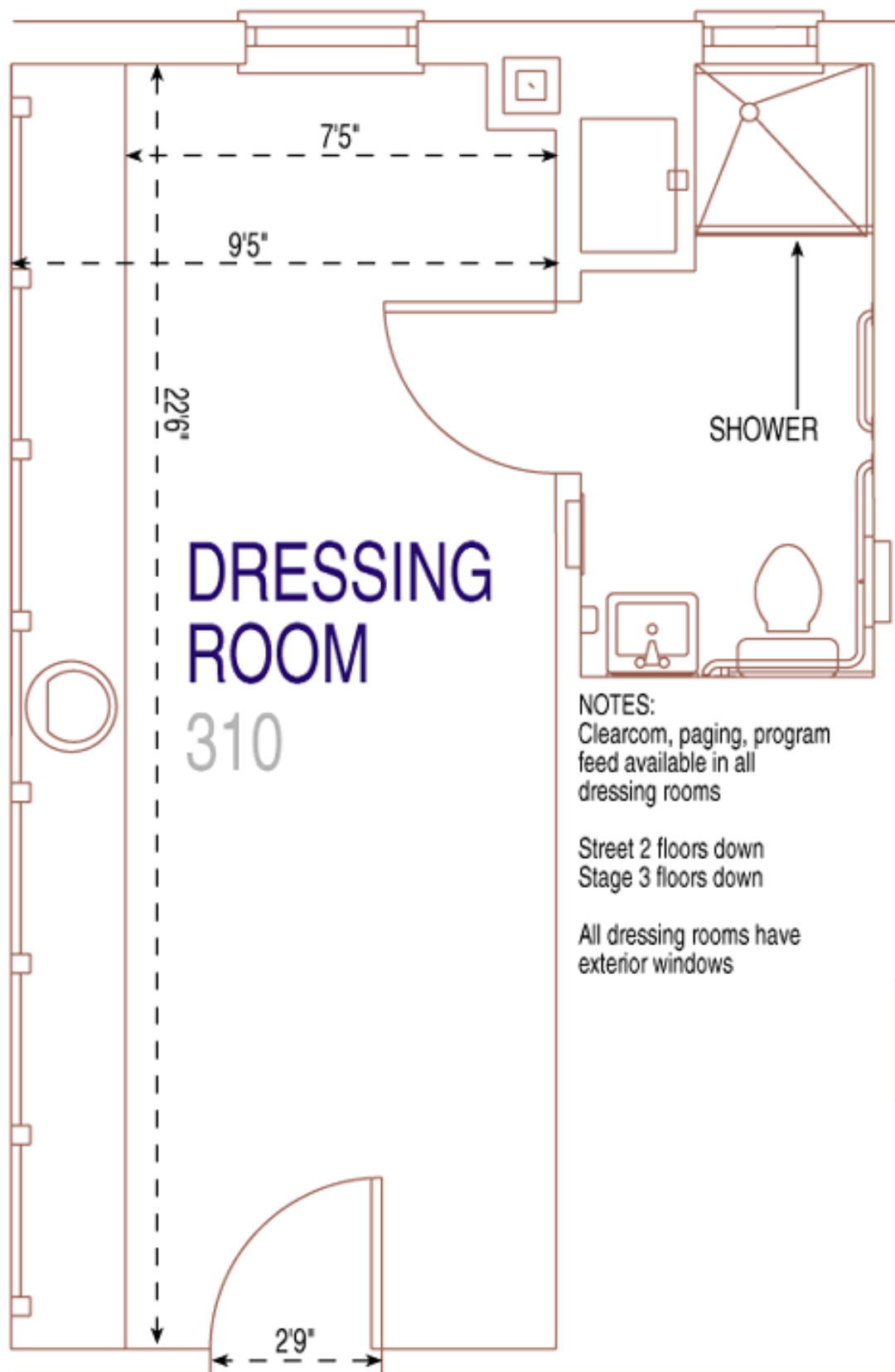
Door clearances are 6'1 1" X 2'9" otherwise

Storage rooms on this floor generally not available for guest

Paging, program, and Clearcom available in all dressing rooms unless

Paramount Theatre: 300 Level Dressing





**NOTES:**

Clearcom, paging, program  
feed available in all  
dressing rooms

Street 2 floors down  
Stage 3 floors down

All dressing rooms have  
exterior windows

**CORRIDOR 303**

Paramount Theatre: Typical 300 Level Dressing Room

# NOTES

Ceiling height 8'

Door clearances 6'11" x 2'9"

Clearcom, paging, program feeds in 404

Paging, program feeds in 403

Seven lighted makeup mirrors

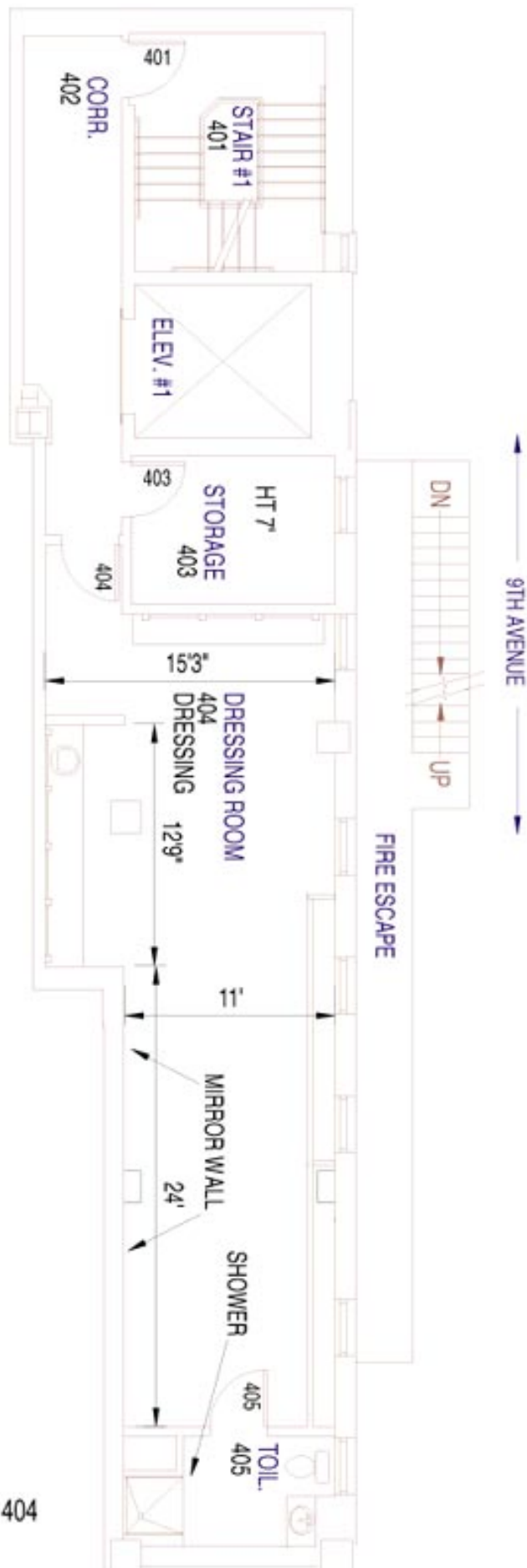
Six full length 35" wide mirrors

28ft dancer's stretching rail

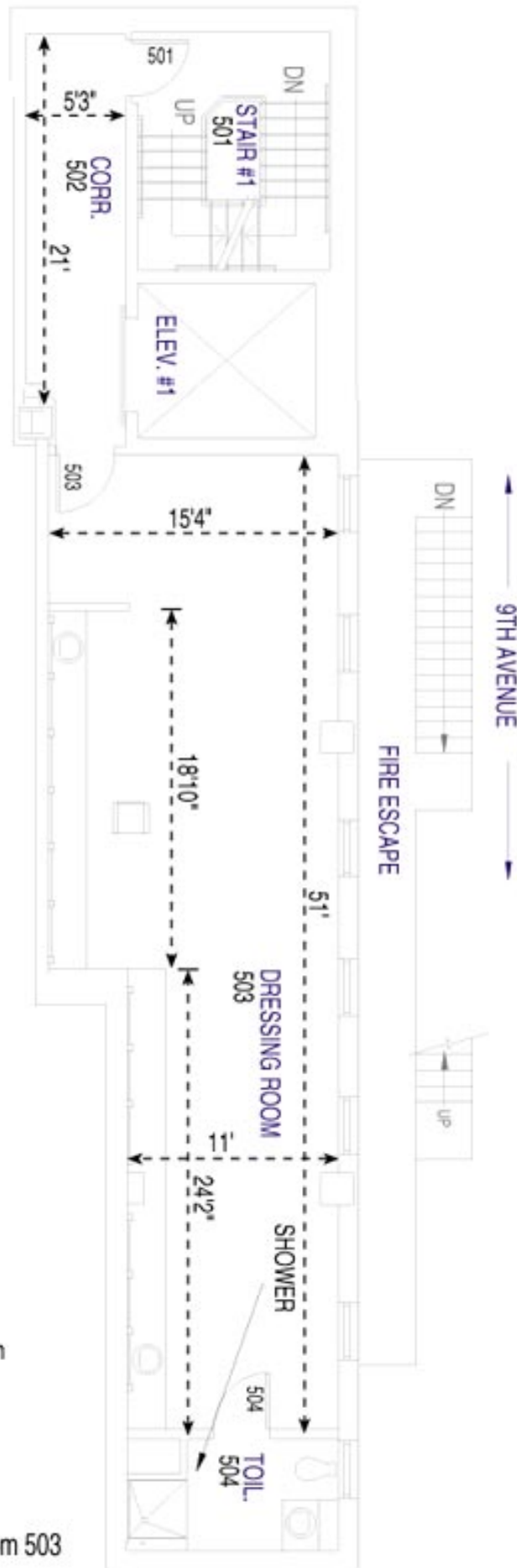
Street down 3 floors

Stage down 4 floors

Paramount Theatre: Dressing Room 404







NOTES:

Ceiling height: 8'

Door clearances: 6'11"x2'9"

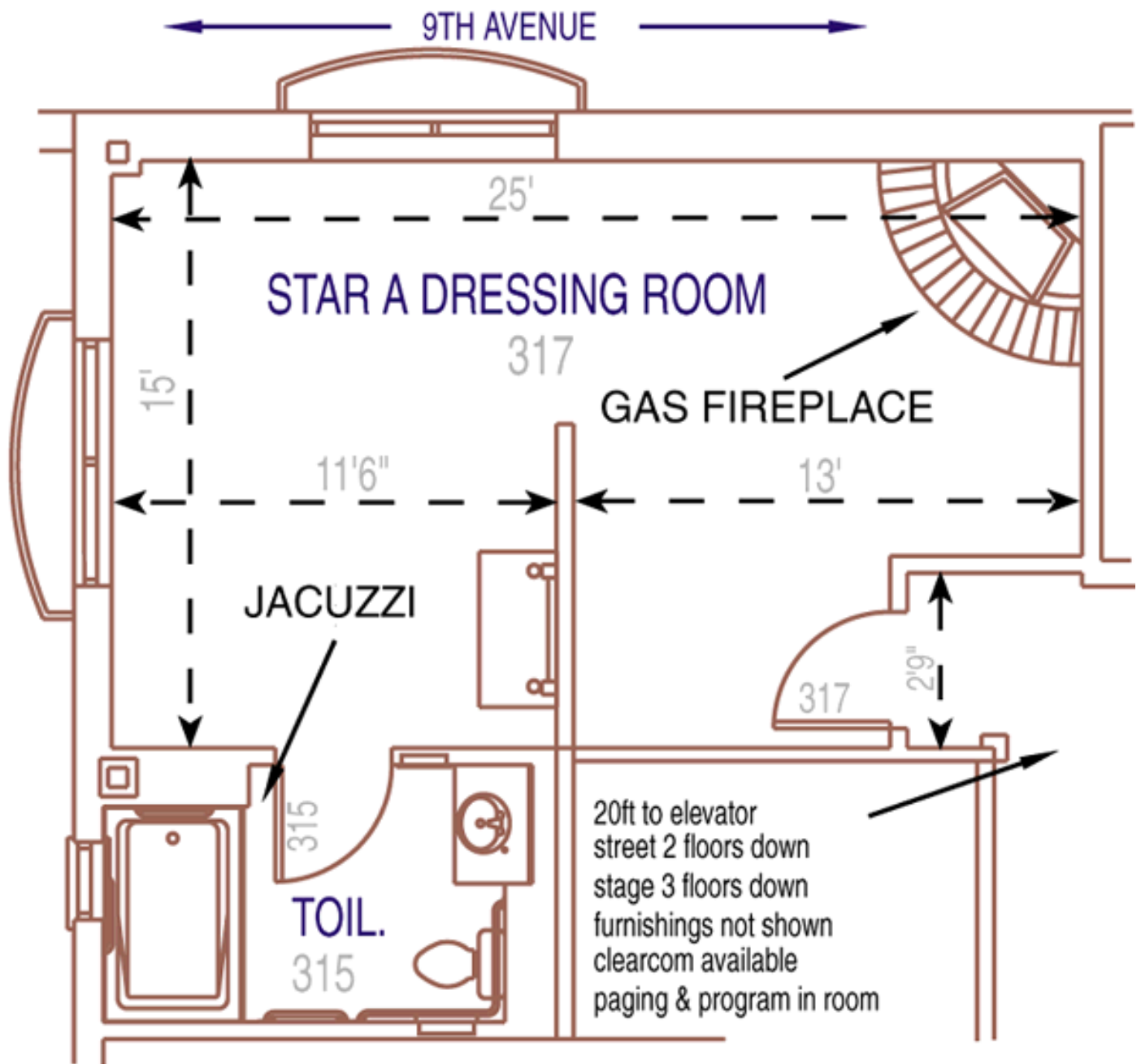
Clearcom, paging, program feed in room

12 lighted makeup mirrors

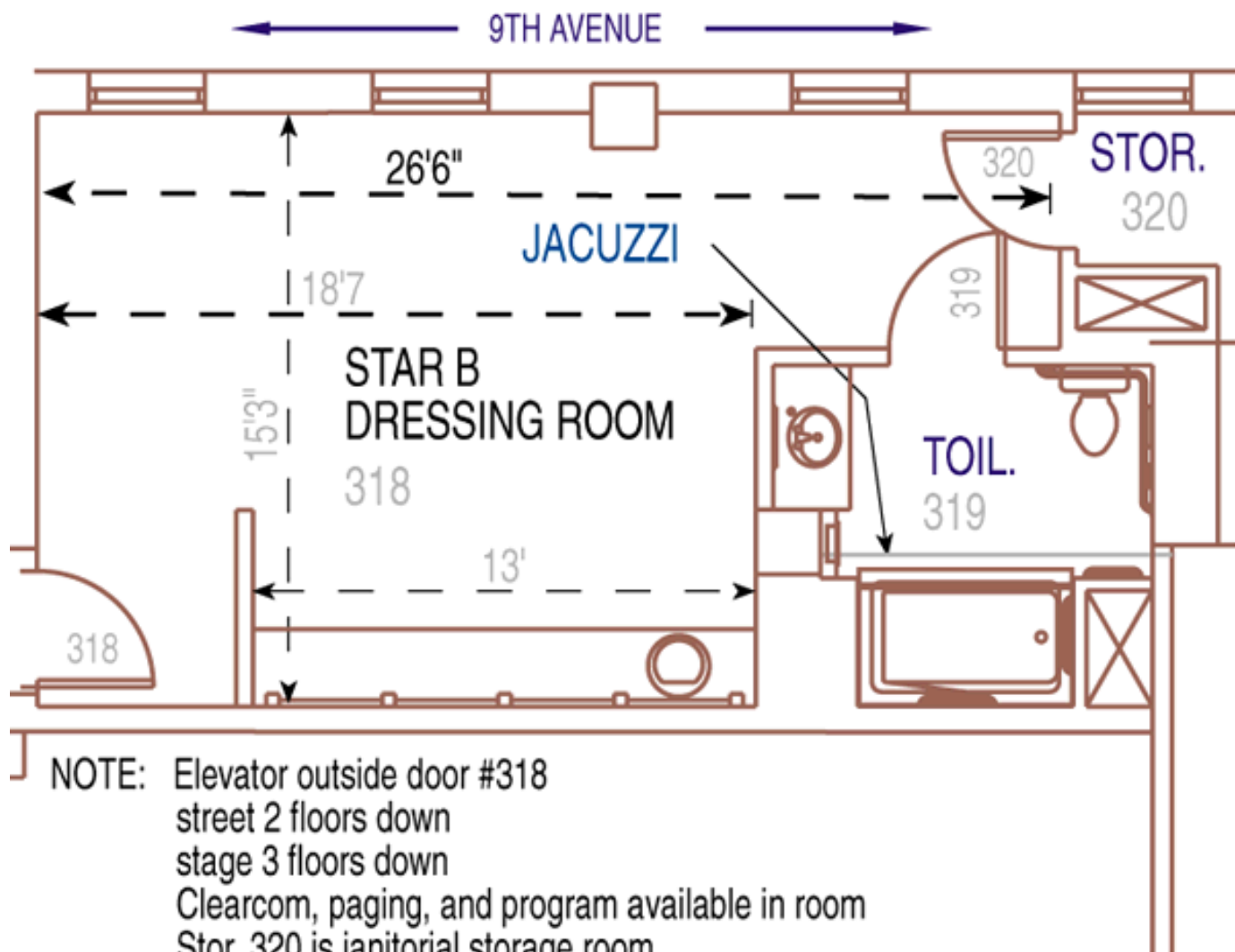
Street down 4 floors

Stage down 5 floors

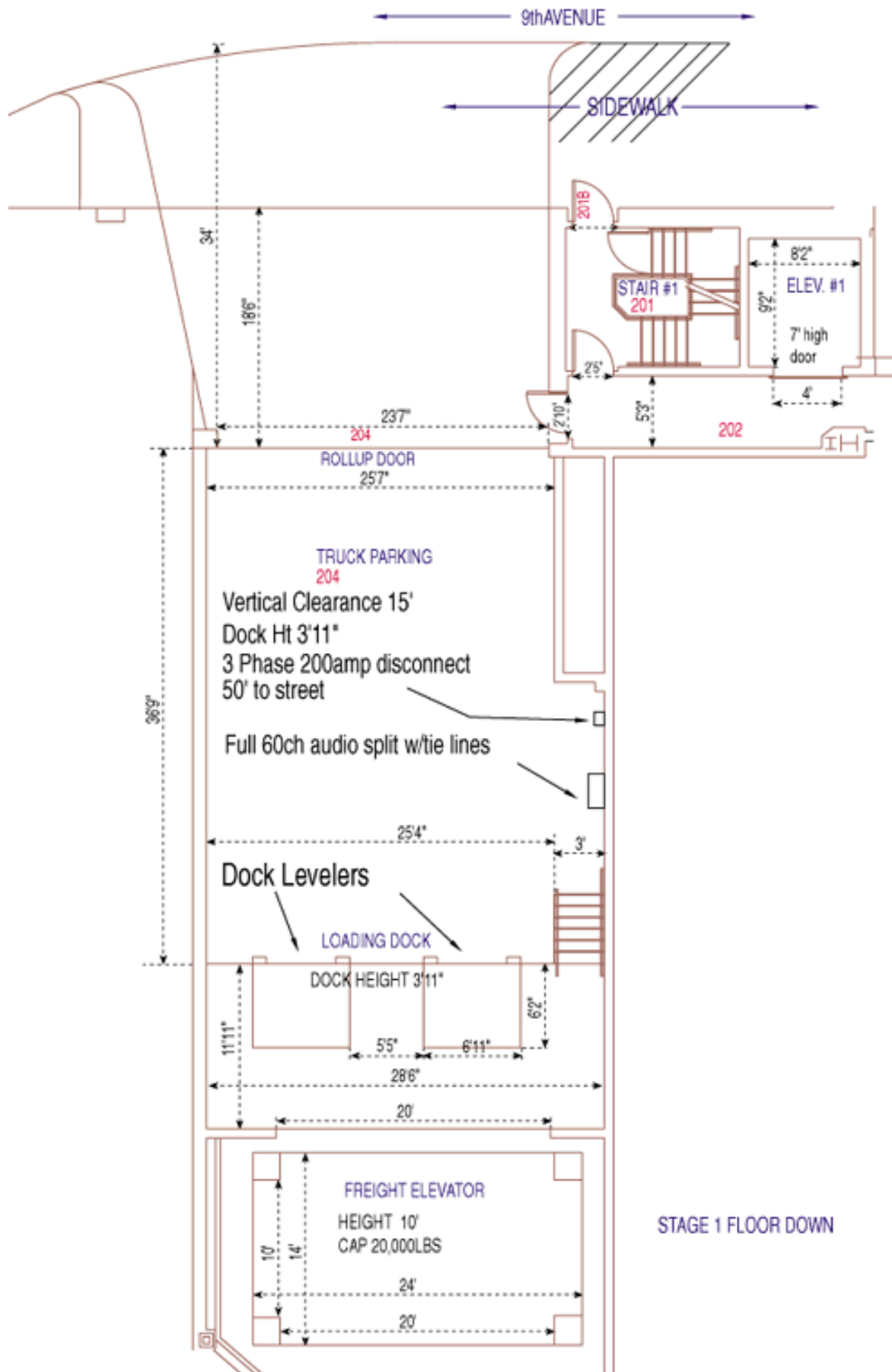
Paramount Theatre: Dressing Room 503



Paramount Theatre: Star Dressing Room 317



## Paramount Theatre: Star Dressing Room 318



Paramount Theatre: Truck Loading Dock Area